
Table of Contents

RICE LAKE

Rice Lake RS-130
Battery-Operated Price Computing Scale **R-2**

ISHIDA

Ishida Astra
Price Computing Scale with Printer **R-3**
Ishida Astra
Standard Label Formats **R-5**

INTRUDER

Intruder™ Cut-Resistant Glove..... **R-6**
Intruder™ QuikSharp
Complete Knife Sharpening System **R-6**



Rice Lake RS-130

Battery-Operated Price Computing Scale



APPROVALS



Measurement
Canada
Approved

STANDARD FEATURES

- Rechargeable battery/charger included
- Toggle between lb/kg/oz**
- Eight PLU keys for direct price lookups
- Cash back calculation
- Large stainless steel platter
- Easy-to-read customer display
- In-use cover
- 89 PLUs for indirect price lookups
- Battery charge indicator
- Customer display
- NTEP Certified Legal-for-Trade

**Ounces not available in Measurement Canada Approved Model

SPECIFICATIONS

CAPACITY/GRADUATIONS:

30lb x 0.01 lb
15 kg x 0.005 kg
480oz x 0.2oz

DISPLAY ITEMS:

Weight: Five digits
Unit price: Five digits
Total price: Six digits

ACCURACY:

1/3000

DISPLAY:

LCD, 0.453in (11.5mm) character

POWER SOURCE:

DC 6V/25 mA rechargeable battery with
AC adaptor included AC 115V/0.1A (max)

BATTERY LIFE:

100+ run hours

WEIGHT:

10lbs (4.5kg)

PRESET KEY:

Eight direct price lookups
89 indirect price lookups by PLU number

DIMENSIONS (W X D X H):

Platter: 11.8in x 9.5in
Overall: 12.3in x 13.0in x 4.7in

OPERATING TEMPERATURE:

32°F to 104°F (0° to 40°C)

OUTPUT:

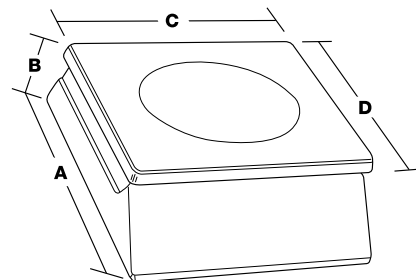
PN 89483 RS-232 (Fixed at)
Baud: 4800
Parity: None
Stop bit: 1
Data bit: 8
Six-digits weight
Five-digits unit price
Six-digits total price

CLASSIFICATION:

NTEP Certified, 04-067, Class III 3000d
Measurement Canada Approved: AM-5565

WARRANTY

One-year limited warranty



DIMENSIONS			
A	13.0in (330mm)	C	11.8in (300mm)
B	4.7in (120mm)	D	9.5in (240mm)

PART #	MODEL	CAPACITY	EST. SHIP WEIGHT	PRICE
85608*	RS-130	30lb x 0.01lb	12lb	\$354.00
89483*	RS-130 with RS-232	30 lb x 0.01 lb/15 kg x 0.005 kg/480 oz x 0.2 oz	12 lb	399.00
94586/**	RS-130 (no ounce)	15 kg x 0.005 kg	12lb	354.00

*Buy qty 5 and get a 50% discount

**Ounces not available in Measurement Canada Approved model

OPTIONS/ACCESSORIES

85772	Additional operating manual	15.00
85773	Additional calibration instructions	5.00
85711	Additional in-use cover	5.25
47976	Fish platter	75.00
47977	Produce platter	75.00

Ishida Astra

Price Computing Scale with Printer



STANDARD FEATURES

- Programmable function keys
- Store up to 2,000 PLUs
- Print speed of 3.15in (80mm) per second
- Convenient side-loading label feature
- RS-232 communications (for AstraLink™)
- Proportional tare
- 44 keys store up to 88 presets

APPROVALS



SPECIFICATIONS

CAPACITY/GRADUATIONS:

30lb x 0.01 lb (15 kg x 0.005 kg)

DISPLAY:

Tare: Four-digits
Weight: Five-digits
Unit/Price: Five-digits
Total Price: Six-digits

ACCURACY:

1/3000

LABEL WIDTH:

1.5in - 2.52in (38mm - 64mm)

LABEL LENGTH:

1.18in - 3.35in (30mm - 85mm)

LABEL BACKING PAPER WIDTH:

Up to 2.64in (up to 67mm)

PRINTING SPEED:

3.15in per second (80mm per second)

LABEL ROLL DIMENSIONS:

Inside diameter: 1.57in (40mm)
Outside diameter: 3.94in (100mm)

COMMUNICATIONS:

RS-232 (for AstraLink PLU editor)
Scale data copy function
Windows® 95, 98 NT, XP and Windows 7

KEYBOARD:

64 keys (88 presets using Mode key)

MEMORY CAPACITY:

256K, 2000 PLUs (30 characters per PLU)

APPROVALS:

NTEP Certified CC# 00-107
UL listed

WARRANTY:

One-year limited warranty

Astralink PLU editing software available



PLU Search Screen



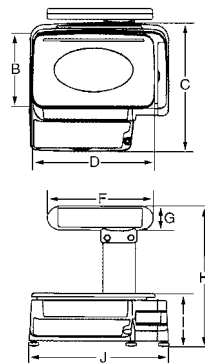
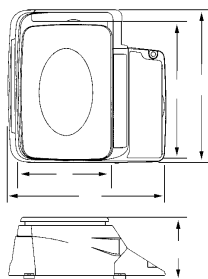
PLU Entry Screen



Program Astra Preset Keys



Preview PLU List Report Before Printing



DIMENSIONS WITHOUT POLE DISPLAY			
A	9.2in (234mm)	D	15.7in (400mm)
B	16.3in (414mm)	E	6.5in (165mm)
C	14.1in (358mm)		

Windows is a registered trademark of Microsoft corporation

DIMENSIONS WITH POLE DISPLAY			
B	9.2in (234mm)	G	3.1in (80mm)
C	16.3in (415mm)	H	18.3in (465mm)
D	14.0in (356mm)	I	6.9in (176mm)
F	12.2in (310mm)	J	15.7in (400mm)

Ishida Astra

Price Computing Scale with Printer (Cont.)

PART #	MODEL	CAPACITY	EST. SHIP WEIGHT	PRICE
64986.....	Astra.....	30lb x 0.01 lb	32 lb	\$1,530.00
68505.....	Astra w/pole display.....	30lb x 0.01 lb	35 lb	1,610.00

OPTIONS/ACCESSORIES

66435*/**.....	Astra CD-ROM (Contains AstraLink™ and AstraLabel™ software programs, operating manual, and label format worksheets)		40.00
66535.....	RS-232 Null modem 6ft cable, DB9 female to DB9 female (Astra to PC, Astra to Astra)		35.00
47977.....	Produce platter		75.00
47976.....	Fish platter		75.00
47341.....	Continuous roll thermal journal paper, 64mm W x 50m L (for reports only)		5.00
66423*.....	Service manual (lb model)		15.00
66019*.....	Additional operating manual (lb model).....		15.00

Label Stock

(Please consult factory for case quantity pricing)

(Examples shown on next page)

(Labels sold by the case-12 rolls per case)

47732.....	2.36 in x 1.73 in (60 mm x 44 mm).....	66.00
47733.....	2.52 in x 1.85 in (64 mm x 47 mm).....	66.00
47735.....	2.52 in x 2.32 in (64 mm x 59 mm).....	66.00
47736.....	Pre-printed safe handling instructions, 2.52 in x 2.32 in (64 mm x 59 mm)	66.00
47743**.....	Extended text, 2.52 in x 3.34 in (64 mm x 85 mm)	66.00
47745.....	Pre-printed safe handling instructions on top of label, 2.52 in x 3.34 in (64 mm x 85 mm)	66.00
47762.....	Non-barcode, 2.52 in x 1.46 in (64 mm x 37 mm).....	66.00

* Manuals and software programs can be downloaded for FREE from our website at www.ricelake.com/retail

** No charge when ordered along with part number 64986/68505

*** Safe handling instructions can also be printed by scale

Ishida

Ishida Astra Standard Label Formats

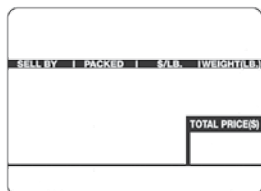
The labels shown below are 55% of actual size.

Titles on labels are pre-printed (SELL BY, PACKED ON, \$ LB., NET WT, TOTAL PRICE)

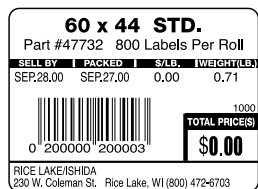
Maximum description text per label

Formats 1-5	1 title line + 2 ingredient lines
Format 6	1 title line + 6 ingredient lines
Format 7	1 title line + 17 ingredient lines
Format 8	1 title line + 6 ingredient lines

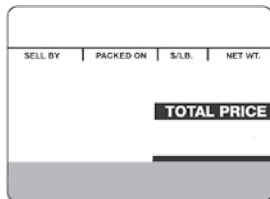
Format 1 47732



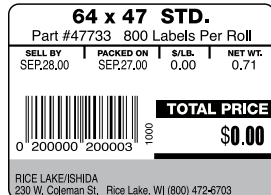
Example



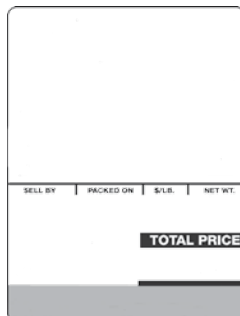
Format 2 47733



Example



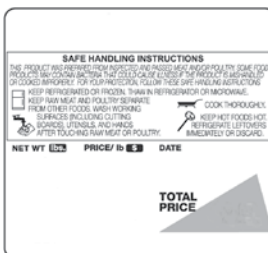
Format 3 47743



Example



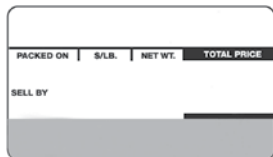
Format 4 47736



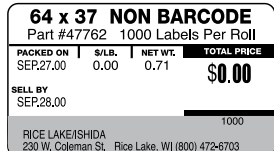
Example



Format 5 47762



Example



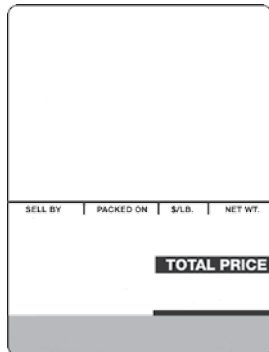
Format 6 47735



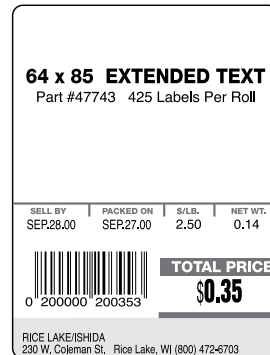
Example



Format 7 47743



Example



Format 8 47735



Example



Intruder™ Cut-Resistant Glove

Glove



CAUTION: Glove is cut-resistant not cut-proof or point puncture resistant and should not be used with moving or serrated blades

STANDARD FEATURES

- Stainless steel core fiber
- Withstands high pressure cleaning
- Stain and odor resistant
- FDA/USDA approved materials

SPECIFICATIONS

CONSTRUCTION:

37 AWG solid 304 stainless steel NOM OD: 0.0045
 1000 Denier polyester strength member NOM OD: 0.10
 8 mils non-toxic PVC jacket

Intruder

PART #	DESCRIPTION	SIZE	EST. SHIP WEIGHT	PRICE
78717*	Cut-Resistant Glove.....	Small.....	1 lb	\$12.00
78718*	Cut-Resistant Glove.....	Medium	1 lb	12.00
78719*	Cut-Resistant Glove.....	Large	1 lb	12.00

Consult factory for bulk pricing

* Glove is cut-resistant not cut-proof or point puncture resistant and should not be used with moving or serrated blades

Intruder™ QuikSharp™

Complete Knife Sharpening System



STANDARD FEATURES

- Tungsten carbide sharpener
- Ceramic honing rods
- Reversible blades

SPECIFICATIONS

BLADES:

Tungsten carbide

HONING RODS:

Ceramic

DIMENSIONS (L X W X H):

6 in x 0.75 in x 2.5 in (152.4 mm x 19.05 mm x 63.5 mm)

PART #	DESCRIPTION	EST. SHIP WEIGHT	PRICE
78720.....	Knife Sharpener.....	1 lb	\$12.00