

Orthotropic Concrete Weighbridge

Designed, Tested, and Built to Last



POWERCELL Load Cells

POWERCELL PDX load cells deliver the ultimate in vehicle weighing. They provide the highest accuracy and unequalled reliability, even in extreme climates and environments. An internal predictive diagnostics system monitors performance to identify potential problems and alert you before they can shut down your scale.



Orthotropic Design

Model VTC221 easily handles the forces generated by normal truck traffic, distributing concentrated loads more effectively than standard I-beam deck structures. The robust orthotropic design is similar to the one used on the Golden Gate Bridge and many other highway bridges around the world.



Lightning Protection

The specially designed StrikeShield™ lighting protection system helps prevent costly downtime by using multiple levels of protection to safeguard your entire scale system: load cells, cables, and terminal. It is the only system that has been tested by third-party laboratories and withstood multiple lightning strikes.



Proven Performance

Using the "Module Masher" accelerated-life-cycle test stand, we have tested actual scale modules for 2 million cycles with a minimum live load of 80,000 lb (equal to 20 years of truck traffic). This is one of the ways that METTLER TOLEDO goes beyond the competition to provide the most reliable scales in the industry.

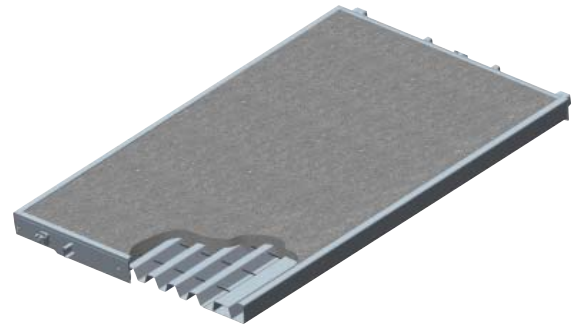


VTC221 Truck Scale

Model VTC221 is the strongest METTLER TOLEDO concrete deck truck scale. It combines a concrete driving surface with a robust orthotropic understructure similar to those used in our steel deck truck scales. This composite design draws upon the strengths of both concrete and steel to produce an exceptionally durable structure. It eliminates a common cause of premature deck failure: voids in the deck that occur when pouring concrete around I-beam flanges and sharp corners. As a result, you get a weighbridge capable of handling high volumes of traffic over a long service life. Model VTC221 uses POWERCELL™ PDX™ load cells, which offer unequalled reliability and a predictive diagnostics system designed to keep your scale up and running. By combining the strength of an orthotropic weighbridge with the reliability of POWERCELL load cells, this truck scale ensures that you will get years of trouble-free weighing even in the harshest environments.

VTC221 Truck Scale

Modular Concrete Deck Weighbridge



Specifications	
Concrete Thickness	10 in (254 mm)
Scale Widths	9 ft-10 in, 10 ft, 11 ft, 12 ft (3, 3.3, 3.7 m)
Scale Lengths	10 to 140 ft (3 to 42.7 m)
Profile	14.5 in (368 mm)
Module Lengths	10 ft, 15 ft, 17 ft-6 in, 20 ft, 23 ft-4 in (3, 4.6, 5.3, 6.1, 7.1 m)
Steel Type	ASTM A-36
Capacity*	120,000 lb (scale lengths ≤ 23 ft-4 in) 200,000 lb (scale lengths > 23 ft-4 in)
Foundation Types	Variable Footer, Beam Slab, or Pit
eMin	20 lb (10 kg)
nMax	10,000 divisions
Concentrated Load Capacity	100,000 lb (45,350 kg)
NTEP Certificate	09-047

Each scale module is ready to fill with concrete when it arrives at the site. This reduces installation time and the expense of installing rebar or performing other deck preparation on site.

Applications

Suitable for weighing over-the-road vehicles in a wide variety of applications:

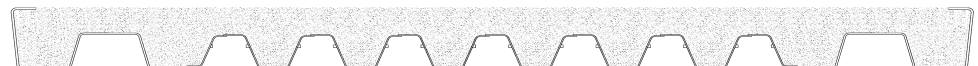
- Solid Waste
- Mining
- Ports
- Forest Products
- Bulk Foods
- Aggregates
- Scrap Metals
- Utilities
- Chemicals
- Truck Stops

*Note: 200,000 lb is the maximum gross capacity that any truck scale can have and still maintain 20-lb increments in legal-for-trade applications.

Features	Benefits
StrikeShield™ Lightning Protection	Prevents lightning damage to load cells and other equipment.
International Intergard® Finish	Protects steel against corrosion even in the harshest environments.
50t POWERCELL™ PDX™ Load Cells	Stainless steel load cells provide highest accuracy and reliability.
Top Access to Load Cells	Makes it easy to perform inspections and maintenance.
Orthotropic Structure	Exceptionally strong weighbridge meets highest performance requirements.
Scale Terminal	Full-featured terminal for inbound/outbound weighing and filling operations.

Options:

- Multi-Axle Configurations
- High-Clearance Risers
- Manholes
- Side Rails
- Grain Dump
- Dolly Landing Pads
- Debris Seals
- OverDrive® Vehicle Scale Software
- Unattended Driver Terminals



VTC221 Cross Section



Produced in a facility that is



Mettler-Toledo, Inc.

1900 Polaris Parkway
Columbus, Ohio 43240
Tel. (800) 786-0038
(614) 438-4511
Fax (614) 438-4900

Subject to technical changes.
© 2009 Mettler-Toledo, Inc.
109-TR03504.OE

www.mt.com/vehicle

For more information