

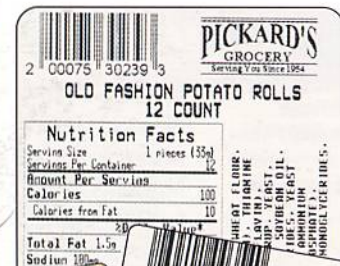
8450 Integrated Scale/Printer



Use with Ethernet,
Wireless, or Master/Satellite
Configurations

Self-Serve Applications

Satisfy Loyalty Program
Applications with Dual
Pricing



METTLER TOLEDO

Use "Client" Configuration with Ethernet Connection to Ethernet Master or ISP. Print Extra Text, Nutrifacts, Safe Handling.

You Get Single Point Control with Choice of "Client/Server" or "Master/Satellite" Network



8361 SmartTouch Controller

8450 Client Scale can network to "Master" Mettler Toledo scale/controllers or to ISP.



8461 SmartTouch Integrated Scale/Printer



A "Master/Satellite" or "Client/Server" network gives you single point control of all scales in your store. You decide where to place the control. Your "Master" unit can be a functioning 8461 SmartTouch® integrated scale/printer or 8361 controller. Or choose either an Ethernet Master or your ISP as a "Server" to your 8450 "Clients" via an Ethernet connection.

The "Master" is a fully functioning scale or controller which contains all PLU information and records transaction data from all "Satellite" scales in the network. Centralized management communications functions of the Master are extensive...and even more comprehensive with a Client/Server system. Using a Master scale, all functions are accessed via the function keys on the keyboard. You are led step by step through each function by a prompting alphanumeric display.

8450 Satellite Scale

The Satellite version of the 8450 will network with Master Mettler Toledo® scale models 8461 and 8361. It also accesses a Master scale when your operator requests a PLU. When a transaction is completed, it is reported to the Master where all data is accumulated. Further, the alphanumeric display on each Satellite continues merchandising for you even when the scale is idle. Each Satellite scale comes equipped with Ethernet hardware to support a migration into the new 8450 Client Scale technology.

8450 Client Scale

Ethernet Master scales are ready to support communications from "Client" scales via an Ethernet connection. This maintains all the benefits of a Master/Satellite network, and it utilizes today's networking and communications standards (Ethernet and TCP/IP). Alternately, you can use your ISP as a Server, thus becoming a Master to the 8450 Client scale. This gives you a truly comprehensive Client/Server scale communications system. The 8450 Client Scale instantly accesses the Server each time your operator requests a PLU. It saves valuable time and gives you assured pricing and data integrity throughout your complete network. Using your ISP as a Server, you get all the benefits of using a Master and more.

8450SA Stand Alone Scale

The 8450SA scale has the capability to utilize RAM in 2MB and 4MB increments. The PLU memory can handle over 10,000 items. The preset keyboard can access 48 preset keys allowing you to preprogram 48 of your most active items and recall them at the touch of a key. Standard Ethernet and Serial interfaces enable you to communicate with a host computer whenever you're ready. No expensive upgrade kit required.





FEATURES

BENEFITS

Client Configuration	Use with Ethernet connection to Ethernet Master or ISP
Master/Satellite Configuration	Use with 8361 & 8461 Masters.
Frequent Shopper	Dual pricing for loyalty programs and merchandising
Self-Serve	Reduces service time at checkout counter
Accumulators	Track your product movement.
Merchandising Marquee	Scroll up to ten merchandising messages.
Nutrifacts-Facts, Safe Handling	No upgrades or modifications required.
Graphics	Prints graphics linked by PLU

8450SS Self-Serve Scale

With the 8450SS, your customers can serve themselves and reduce service time at your checkout lines. The customer simply presses the item number of the product they're buying, puts it on the scale and touches the print button. A label is issued showing the commodity name and total price. Then the customer places the label on the package or product and is ready for checkout.

8450SS Self-Serve Scale



8450SSP Self-Serve Pictogram Scale

The 8450SSP makes it easier than ever for your customers to weigh and label their own items. The 35 pictogram presets provides a convenient way for your customers to identify the most popular items or items in close proximity to the scale. A PC may be used to update and print new preset pages for seasonal or promotional changes.

8450 Keyboard

A newly designed, "tactile-feel" ergonomic keyboard features 48 preset keys. When keys are pressed, immediate beeper feedback makes it easy to use. The scale is easy to clean with soap and water cleaners.



8450SSP Self-Serve Pictogram Scale

Frequent Shopper

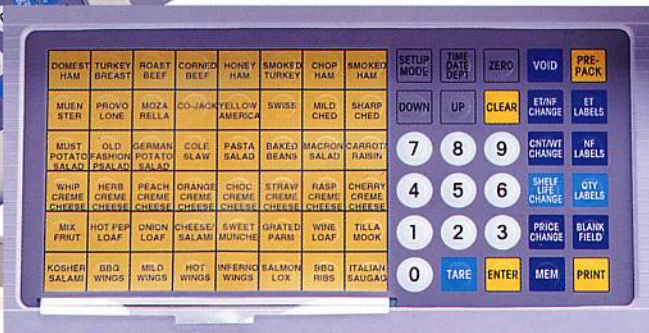
Loyal shoppers account for over 80% of a retail supermarket's sales. All 8450 scales come standard with frequent shopper (dual pricing) support. Capitalize on customer loyalty and turn your price label into a merchandising tool.

Display

The 8450 includes an attractive vendor/customer tower with two bright fluorescent blue displays per side. Programmable marquee makes it ideal for eye-catching store promotions even when the scale is not in use.

Printer

The integrated thermal label printer prints labels that comply with FDA nutritional label requirements, safe handling instructions, and voluntary nutrition, vitamin and mineral information. It prints up to 3240 characters of extra text per PLU. The print speed is almost 5"/second. It features an easy loading label mechanism for standard labels.



"Tactile-feel" ergonomic keyboard

8450 Integrated Scale/Printer



Programmable, Scrolling Merchandising Marquee

Specifications

Capacity

30 x 0.01 lb (15 x 0.005 kg)

Dimensions

Height: 8" (203 mm),
Depth: 11.75" (298 mm),
Width: 17.75" (450 mm)

Weight

30 lb (13.62 kg)

Power Requirements

120 - 240 VAC, 50/60 Hz

Label Formats

Contains default label formats for all specified label types and sizes. Custom formats can be developed on an 8461 and/or 8360.

Options

- Lobster pan, fish pan, produce pan
- Additional backup memory kit



Why Mettler Toledo?

Mettler Toledo has been a major supplier of scales and related equipment to food stores since the turn of the century. We have authorized sales and service offices throughout the U.S., Canada and in every major part of the world. Contact your nearest representative for details.



Mettler-Toledo, Inc.

USA & Canada
1900 Polaris Parkway
Columbus, Ohio 43240
TEL. (800) 786-0038
(614) 438-4511
FAX (614) 438-4900

Mettler-Toledo Ltd.

Australia
TEL. (61) 3 9644 5700
FAX (61) 3 9645 3935

International Operations

Americas
TEL. (614) 438-4801
FAX (614) 438-4755

Europe, Africa, Near East and Pacific Rim
TEL. (41) 1 944 22 11
FAX (41) 1 944 30 60

Internet
www.mt.com

Specifications subject to change without notice.
© 2000 Mettler-Toledo, Inc.
METTLER TOLEDO® is a trademark of Mettler-Toledo, Inc.
Printed on recycled paper and is recyclable.
Printed in USA.

5M0700
RT1038.3E